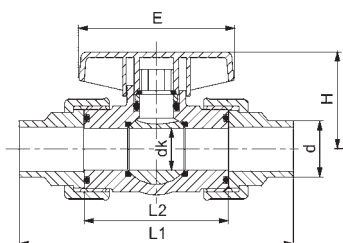
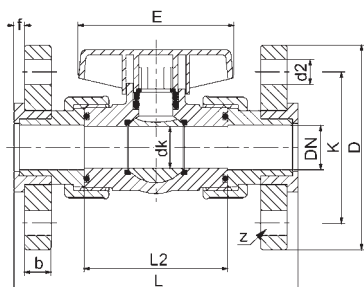
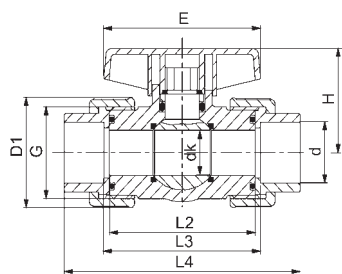


## Zawór kulowy Compact 10, ręczny

samopłucząca kula, bez przestrzeni martwych, łatwy montaż i demontaż  
uszczelka kuli PTFE

ball valve Compact 10, manual valves

safefloat ball, no clearance volume, radial mounting and removal  
ball seat PTFE



### Wielkość sizes

d (mm)		20	25	32	40	50	63
DN (mm)		15	20	25	32	40	50
DN (Zoll / inch)		1/2	3/4	1	1 1/4	1 1/2	2

### Wymiary dimensions

	dk	13,5	18,5	23,5	30,5	38,5	48,5
	b	12,0	14,0	15,0	17,0	17,0	18,0
	D	95,0	105,0	115,0	140,0	150,0	165,0
PVC-U	D1	41,0	51,0	58,0	72,0	80,0	100,0
PP	D1	46,0	56,0	66,0	79,0	87,0	107,0
	d2	14,0	14,0	14,0	18,0	18,0	18,0
	E	60,0	85,0	85,0	120,0	120,0	145,0
	f	6,0	7,0	7,0	8,0	8,0	9,0
	H	42,0	55,0	55,0	70,0	70,0	84,0
	K	65,0	75,0	85,0	100,0	110,0	125,0
	L	130,0	150,0	160,0	180,0	200,0	230,0
	L1	254,0	188,0	211,0	234,0	257,0	293,0
	L2	64,0	76,0	81,0	92,0	95,0	115,0
	L3	70,0	82,0	87,0	98,0	101,0	121,0
PVC-U	L4	102,0	120,0	131,0	150,0	163,0	197,0
PP	L4	99,0	114,0	123,0	139,0	148,0	175,0
	z	4,0	4,0	4,0	4,0	4,0	4,0



Przyłącza: Śrubunek z mufą do klejenia DIN 8063  
DIN/ISO (PVC-U)  
Śrubunek z mufą lub sztucerem do spawania DIN 8063  
DIN/ISO (PP)  
śrubunek z kołnierzem DIN 2501 PN 10/16  
długość wg DIN  
connection: union socket ends for solvent welding  
DIN/ISO (PVC-U)  
union socket ends or spigot ends  
for fusion welding DIN/ISO (PP)  
unions with flanges DIN 2501 PN 10/16  
with DIN face-to-face dimension

Akcesoria patrz rozdz.3.1  
accessories see chapter 3.1