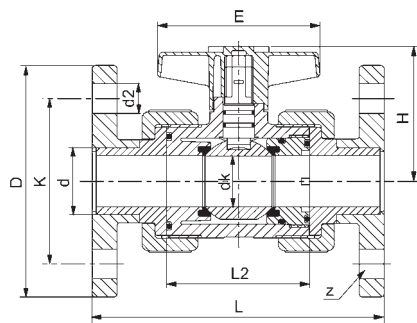
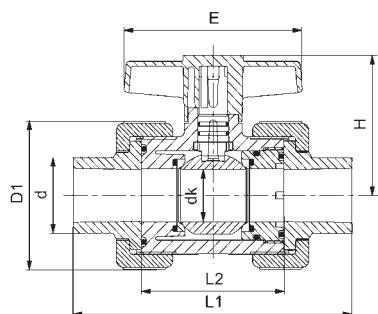
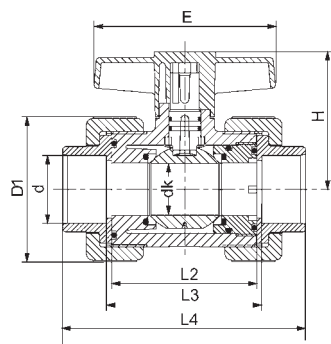


## Zawór kulowy C 100, napęd - rączka

zabudowa pozioma lub pionowa, uszczelnienie kuli PTFE

ball valve C 100, manual valves

radial mounting and removal, ball seat PTFE



### Wielkość sizes

d (mm)	16	20	25	32	40	50	63
DN (mm)	10	15	20	25	32	40	50
DN (Zoll / inch)	3/8	1/2	3/4	1	1 1/4	1 1/2	2

### Wymiary dimensions

	dk	13,5	13,5	18,0	23,5	30,5	38,5	49,0
PVC-U	b	-	12,0	13,0	14,0	17,0	17,0	20,0
PP	b	-	12,0	13,0	14,0	15,0	16,0	18,0
PVDF	b	-	12,0	13,0	14,0	15,0	16,0	18,0
PVC-U	D	-	95,0	105,0	115,0	140,0	150,0	165,0
PP	D	-	94,0	103,0	115,0	138,0	148,0	163,0
PVDF	D	-	93,0	103,0	115,0	137,0	147,0	162,0
	D1	49,0	49,0	59,0	69,0	86,0	101,0	123,0
	d2	-	14,0	14,0	14,0	18,0	18,0	18,0
	E	68,0	68,0	78,0	88,0	98,0	108,0	118,0
	f	-	-	-	-	-	-	-
	h	27,5	27,5	34,5	39,5	48,5	55,5	66,5
	h1	67,5	67,5	74,5	79,5	98,5	105,5	116,5
	H	51,0	51,0	61,0	70,0	81,0	90,0	110,0
	K	-	65,0	75,0	85,0	100,0	110,0	125,0
	L	-	130,0	150,0	160,0	180,0	200,0	230,0
	L1	169,0	169,0	182,0	186,0	196,0	203,0	223,0
	L2	59,0	59,0	72,0	76,0	86,0	93,0	113,0
PVC-U / PVC-C	L3	65,0	65,0	78,0	82,0	92,0	99,0	119,0
PP	L3	71,0	68,0	84,0	90,0	103,0	114,0	140,0
PVDF	L3	70,0	67,0	83,0	89,0	102,0	112,0	138,0
PVC-U / PVC-C	L4	97,0	97,0	116,0	126,0	144,0	161,0	197,0
PP	L4	97,0	97,0	116,0	126,0	144,0	160,0	195,0
PVDF	L4	96,0	96,0	115,0	125,0	143,0	159,0	194,0

Przyłącza: Śrubunek z mufą do wklejenia DIN/ISO (PVC-U, PVC-C)

Śrubunek z mufą lub sztucerem do spawania wg

DIN/ISO (PP, PE, PVDF)

Śrubunek z kołnierzem wg DIN 2501 PN 10/16, długość wg DIN

connection: union socket ends for solvent welding DIN/ISO

(PVC-U, PVC-C) union socket ends or spigot ends for

fusion welding DIN/ISO (PP, PE, PVDF)

unions with flanges DIN 2501 PN 10/16 with

DIN face-to-face dimension