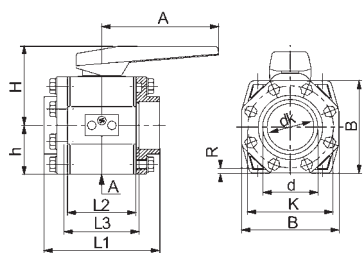
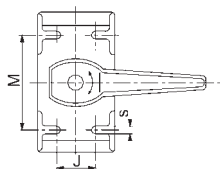
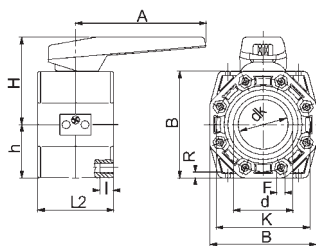


## Zawór kulowy C 110, ręczny

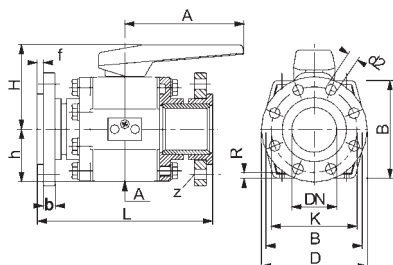
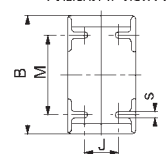
dowolny sposób zabudowy, uszczelka kuli PTFE

ball valve C 110, manual valves

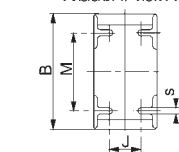
radial mounting and removal, ball seat PTFE



Ansicht A / View A



Ansicht A / View A



Przyłącza: międzykołnierzowe, krótka długość zabudowy

Mufa do wklejenia DIN/ISO (PVC-U)

Mufa lub sztucer do spawania DIN/ISO (PP, PVDF)

Kołnierzowe PP/Stahl DIN 2501 PN 10/16 z zabudową wg DIN

connection: wafer type for short face-to-face dimension

flange socket ends for solvent welding DIN/ISO (PVC-U)

flange socket ends or spigot ends for fusion welding

DIN/ISO (PP, PVDF)

PP/steel flanges DIN 2501 PN 10/16 with

DIN face-to-face dimension

Wposażenie patrz rozdział 3.1

accessories see chapter 3.1

### Wielkość

sizes

d (mm)			75	90	110	140	160
DN (mm)			65	80	100	125	150
DN (Zoll / inch)			2 1/2	3	4	5	6

### Wymiary

dimensions

	dk		64,0	77,0	94,0	94,0	135,0
	A		210,0	210,0	260,0	260,0	310,0
PVC-U / PP	B		169,0	186,0	206,0	206,0	273,0
PVDF	B		168,0	182,0	202,0	202,0	264,0
	b		19,0	21,0	22,0	26,0	27,0
	D		186,0	201,0	221,0	251,0	286,0
	d2		18,0	18,0	18,0	18,0	22,0
	F		M 16	M 16	M 16	M 16	M 20
	f		10,0	11,0	12,0	14,0	16,0
PVC-U / PP	H		142,0	150,0	165,0	165,0	210,0
PVDF	H		140,0	148,0	163,0	163,0	206,0
PVC-U / PP	h		84,5	93,0	103,0	103,0	136,5
PVDF	h		84,0	91,0	101,0	101,0	132,0
PVC-U / PP	J		60,0	60,0	80,0	80,0	130,0
PVDF	J		57,0	57,0	76,0	76,0	124,0
	K		145,0	160,0	180,0	210,0	240,0
PVC-U	L1		206,0	236,0	276,0	-	386,0
PP / PVDF <sup>1)</sup>	L1		180,0	206,0	238,0	-	364,0
PVC-U / PP	L2		112,0	124,0	145,0	-	205,0
PVDF	L2		112,0	123,0	140,0	-	197,0
PVC-U	L3		118,0	134,0	155,0	-	214,0
PP	L3		118,0	134,0	155,0	-	-
PVDF	L3		118,0	133,0	150,0	-	-
	L		290,0	310,0	350,0	400,0	480,0
	l		20,0	20,0	20,0	20,0	30,0
PVC-U / PP	M		111,0	124,0	137,0	137,0	179,0
PVDF	M		111,0	122,0	133,0	133,0	175,0
	R		5,5	6,0	8,0	8,0	10,0
	S		8,5	8,5	8,5	8,5	8,5
	Z		4,0	8,0	8,0	8,0	8,0

1) d 160: sztucer do spawania

1) d 160: connection spigot ends for butt welding