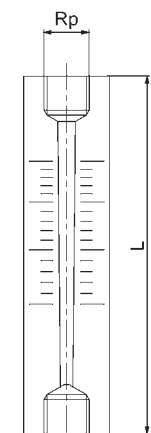
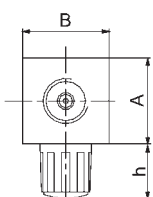


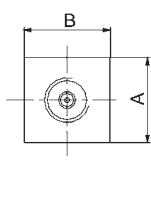
DFM 100



DFM 101



DFM 102



DFM 103

### Rotametr DFM 100

regulacja przepływu, tuba pomiarowa PMMA, pływak V2A

flowmeter DFM 100

with flow control, measuring tube PMMA, float SS 1.4301

### Rotametr DFM 101

tuba pomiarowa PMMA, pływak V2A

flowmeter DFM 101

measuring tube PMMA, float SS 1.4301

### Rotametr DFM 102

tuba pomiarowa PMMA, pływak V2A

flowmeter DFM 102

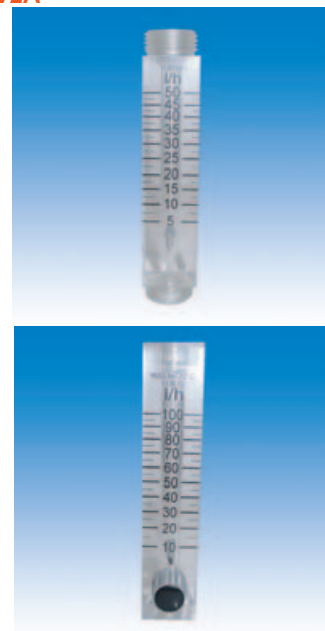
measuring tube PMMA, float SS 1.4301

### Rotametr DFM 103

regulacja przepływu, tuba pomiarowa PMMA, pływak V2A

flowmeter DFM 103

with flow control, measuring tube PMMA, float SS 1.4301



#### Wymiary DFM 100 / DFM 101

dimensions

Skala / scale (l/h)		1,5- 15	2,5- 25	5 - 50,0	10 - 100
A		25,0	25,0	25,0	25,0
B		25,0	25,0	25,0	25,0
h		15,0	15,0	15,0	15,0
L		105,0	120,0	120,0	120,0
Rp (Zoll / inch)		1/4	1/4	1/4	1/4

#### Wymiary DFM 102 / DFM 103

dimensions

Skala / scale (l/h)		1,5- 15	2,5- 25	5 - 50	10 - 100
A		25,0	25,0	25,0	25,0
B		25,0	25,0	25,0	25,0
h		20,0	20,0	20,0	20,0
L		105,0	120,0	120,0	120,0
Rp (Zoll / inch)		1/4	1/4	1/4	1/4
R (Zoll / inch)		5/8	5/8	5/8	5/8

Przylączy: Mufa gwint wewn. Rp (DFM 100 - DFM 103)  
 Sztucer gwint zewn. R (DFM 102 - DFM 103)  
 connection: female threaded sockets Rp (DFM 100 - DFM 103)  
 threaded necks R (DFM 102 - DFM 103))